



Regional Climate outlook Forum of ACCRA-GHANA

PRESASS-04

SEASONAL CLIMATE FORECAST FOR JUN-JULY-AUGUST AND JULY-AUGUST- SEPTEMBER 2017 ACMAD

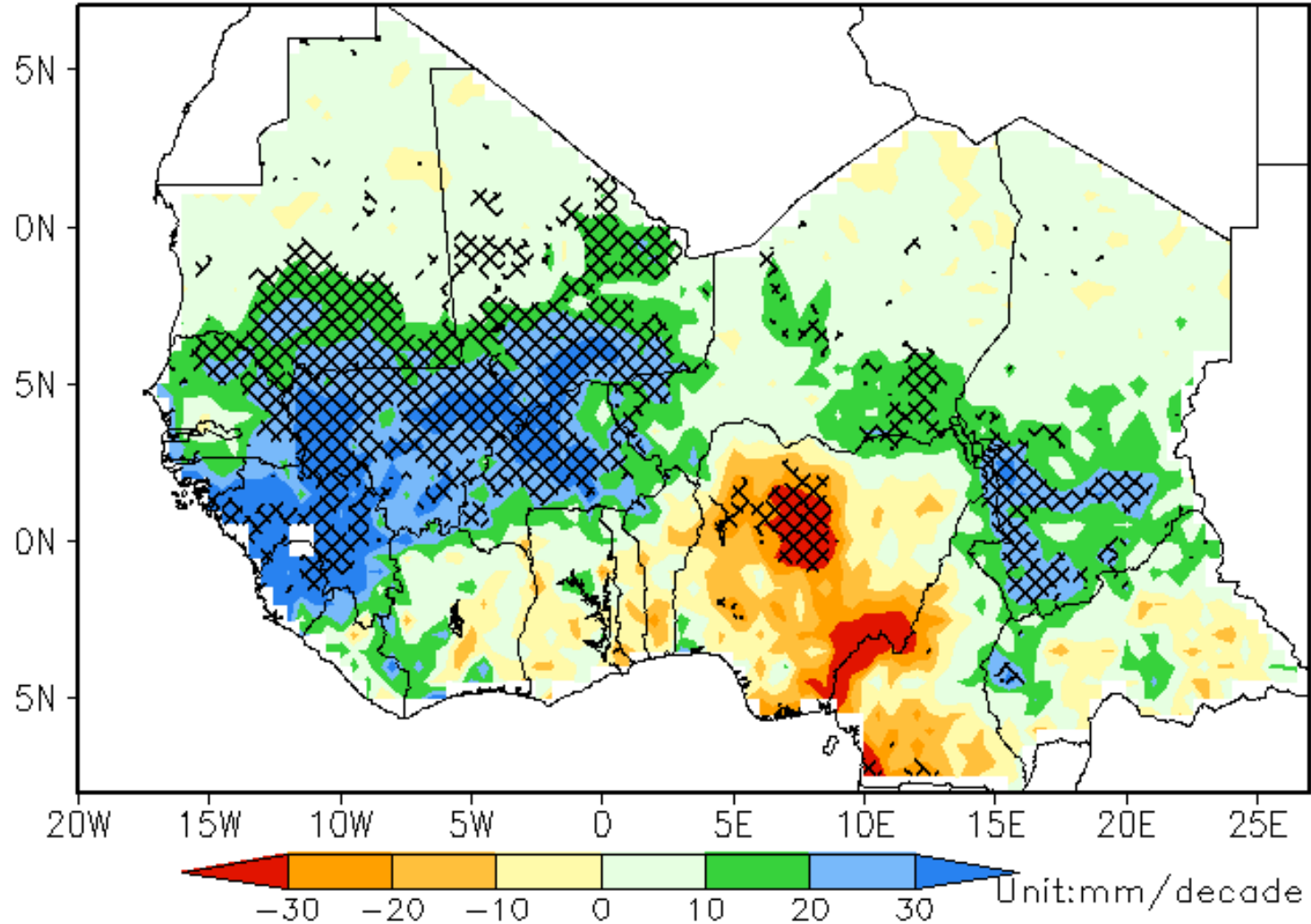
Mbaiguedem MIAMBAYE
ACMAD/MESA Continental Climate THEMA
Thematic Expert: Drought service and Seasonal Climate Forecast

15-19 May, 2017 ACCRA-Ghana



TREND MAP JJA

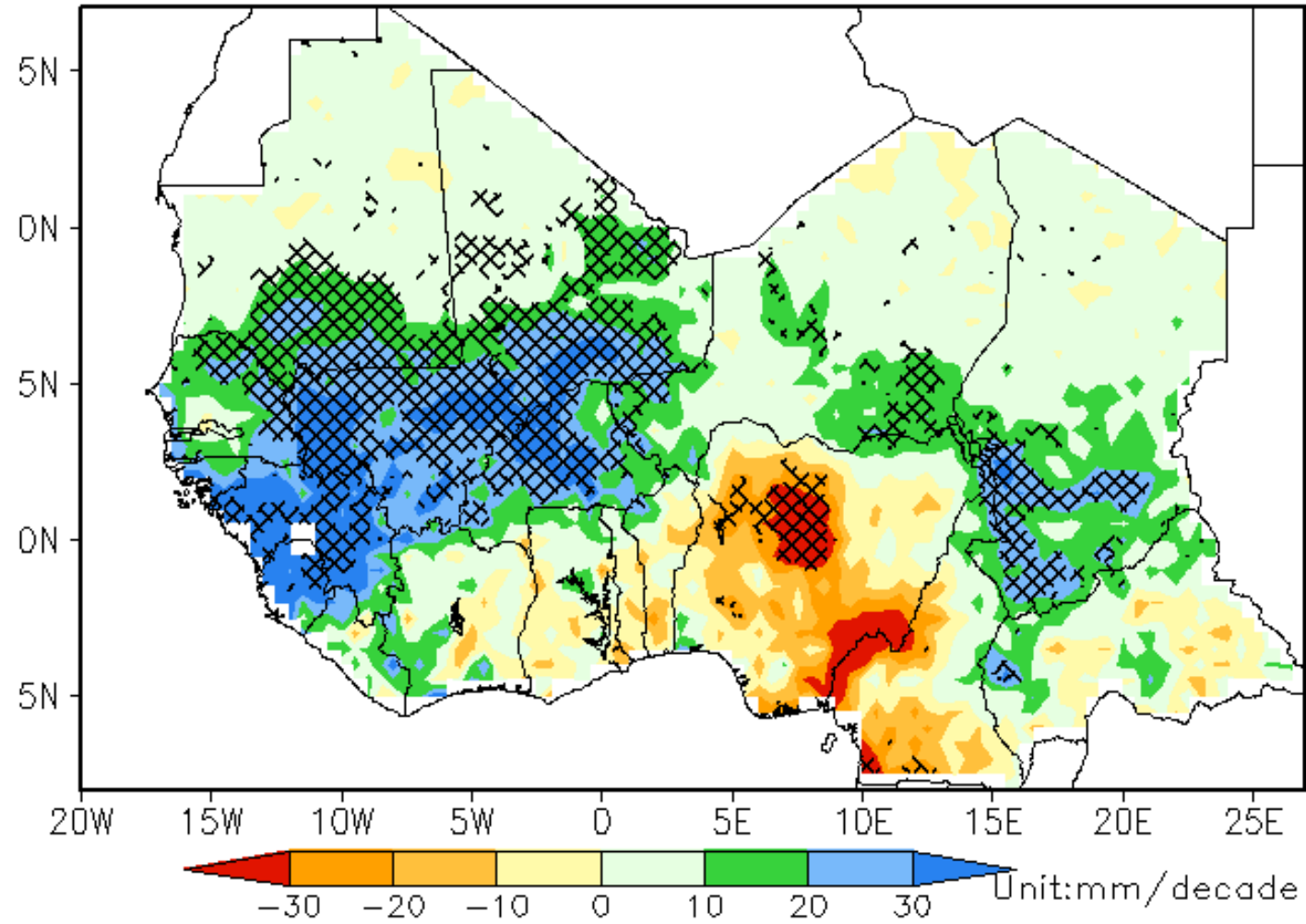
ARC2 JJA TREND (1996–2016)





TREND MAP JAS

ARC2 JAS TREND (1996–2016)

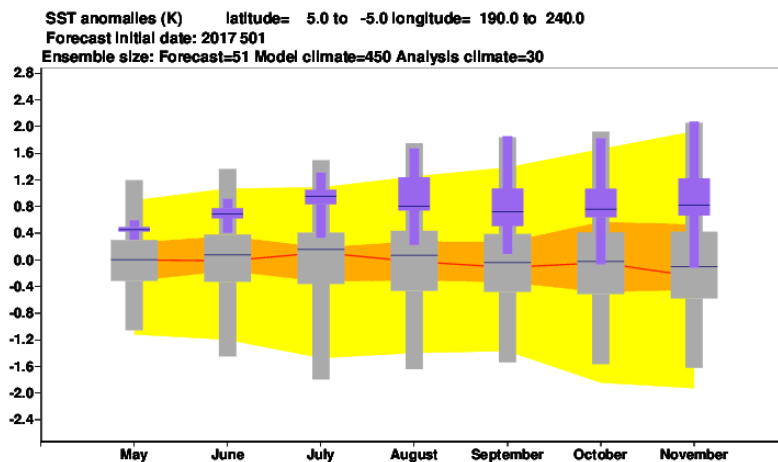
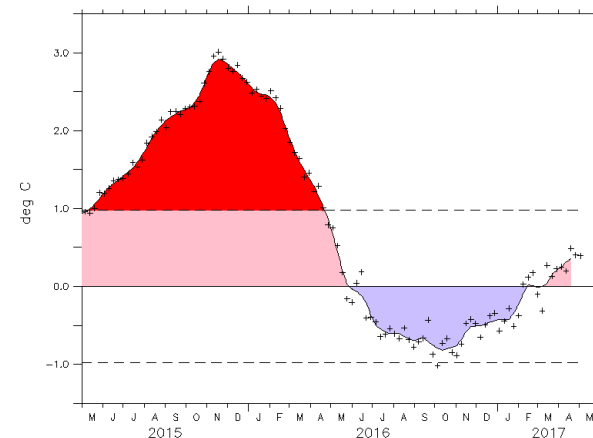
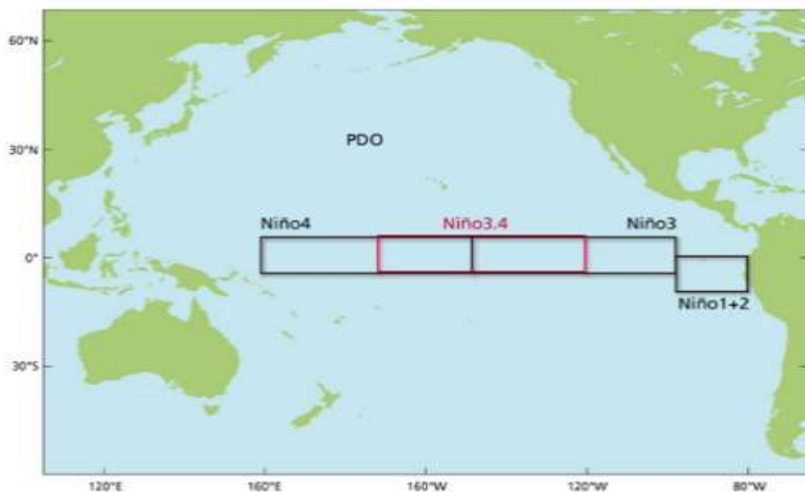




TELECONNECTIONS INDICES

Pacific Basin
NINO3.4

OOPC Observed SST timeseries to add



A weak La Nina SST anomaly of near 0.5 was observed to have persisted for the past four months in the Tropical Pacific ENSO region. This condition is expected to evolve to ENSO-warm by May 2017 and eventually near to above average condition from March onwards.

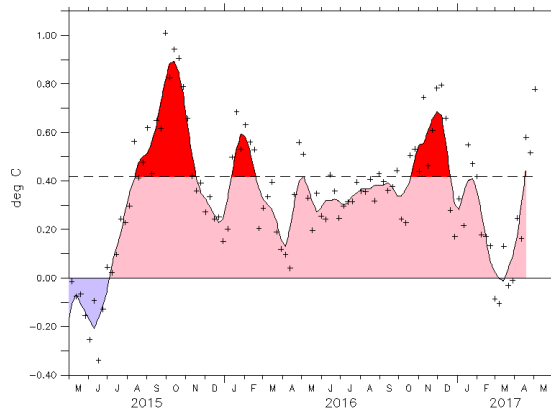
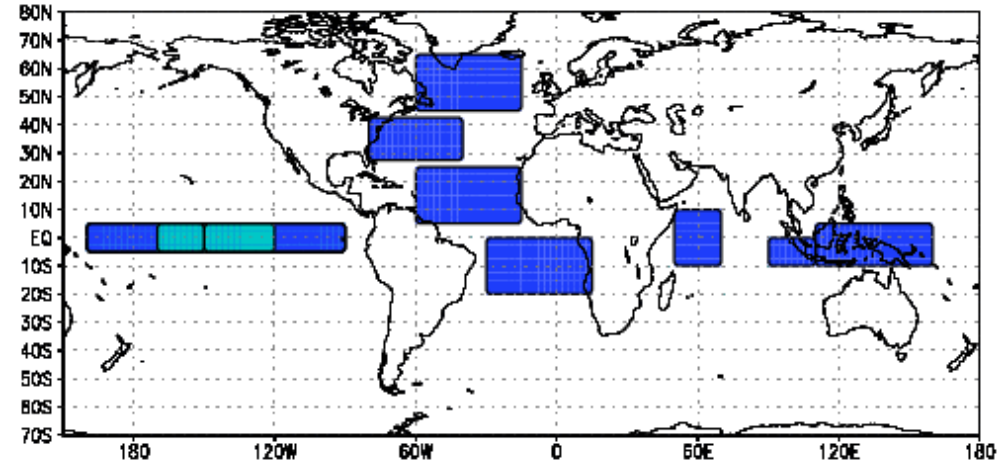
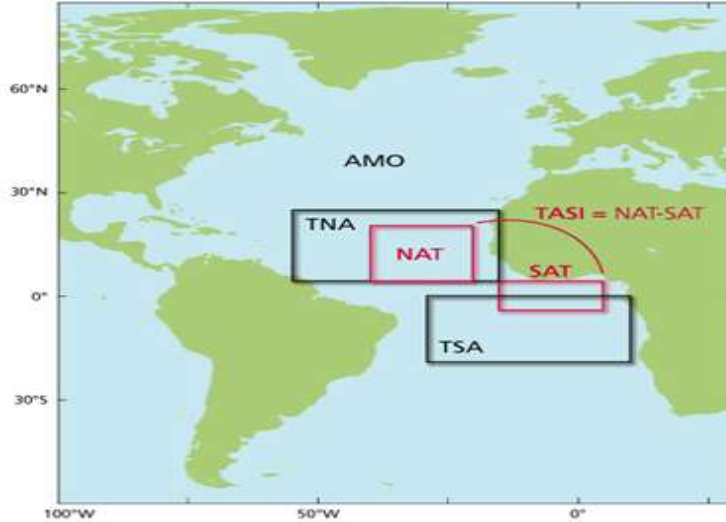
<http://stateoftheocean.osmc.noaa.gov/sur/>

http://www.ecmwf.int/en/forecasts/charts/seasonal/sea-surface-temperature-area-averages-long-range-forecast?time=2016010100,0,2016010100&index_type=NINO3_4

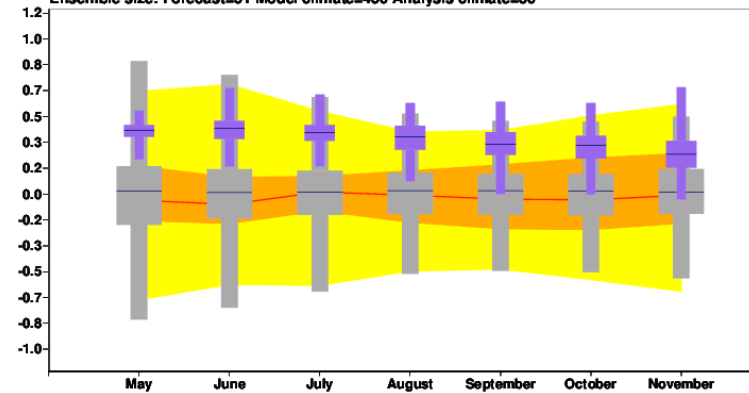


TELECONNECTIONS INDICES

Tropical North Atlantic: TNA



SST anomalies (K) latitude= 25.0 to 5.0 longitude= 300.0 to 345.0
Forecast initial date: 2017 501
Ensemble size: Forecast=51 Model climate=450 Analysis climate=30

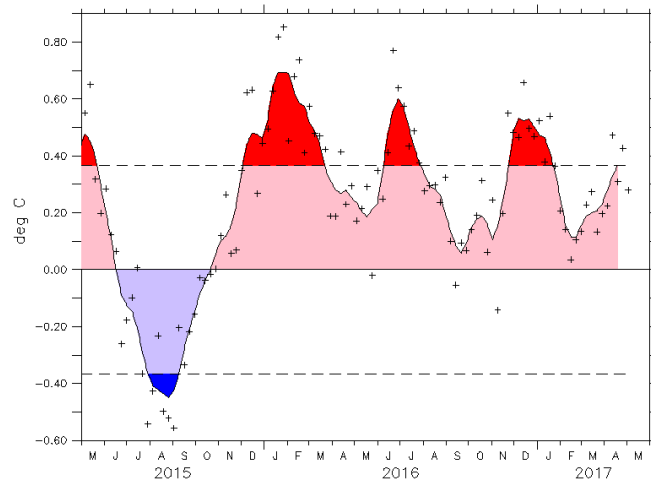
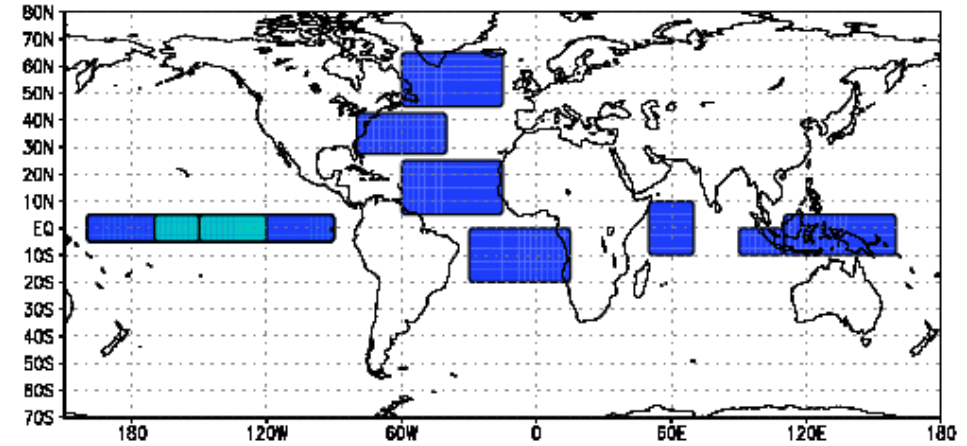
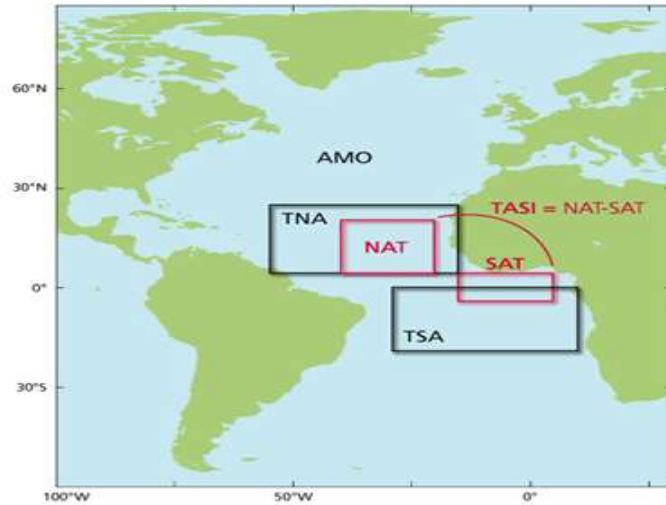


[http://www.ecmwf.int/en/forecasts/charts/seasonal/sea-surface-temperature-area-averages-long-range-forecast?time=2016010100,0,2016010100&index_type=Northern%20Trop%20Atlantic/seasonal/forecast/seasonal_range_forecast/groupp/Climagrams_sst!Sea%20Surface%20Temperature!Northern%20Trop%20Atlantic!201508!/
\[http://ioc-goos-oopc.org/state_of_the_ocean/sur/atl/tna.php\]\(http://ioc-goos-oopc.org/state_of_the_ocean/sur/atl/tna.php\)](http://www.ecmwf.int/en/forecasts/charts/seasonal/sea-surface-temperature-area-averages-long-range-forecast?time=2016010100,0,2016010100&index_type=Northern%20Trop%20Atlantic/seasonal/forecast/seasonal_range_forecast/groupp/Climagrams_sst!Sea%20Surface%20Temperature!Northern%20Trop%20Atlantic!201508!/)

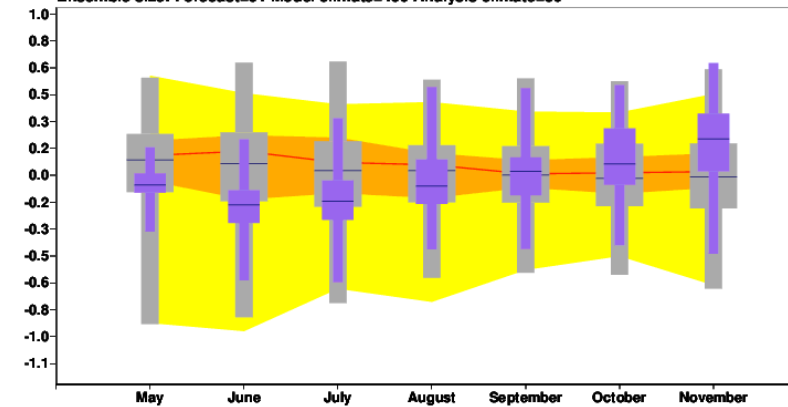


ATLANTIC BASIN INDEX

Tropical South Atlantic: TSA



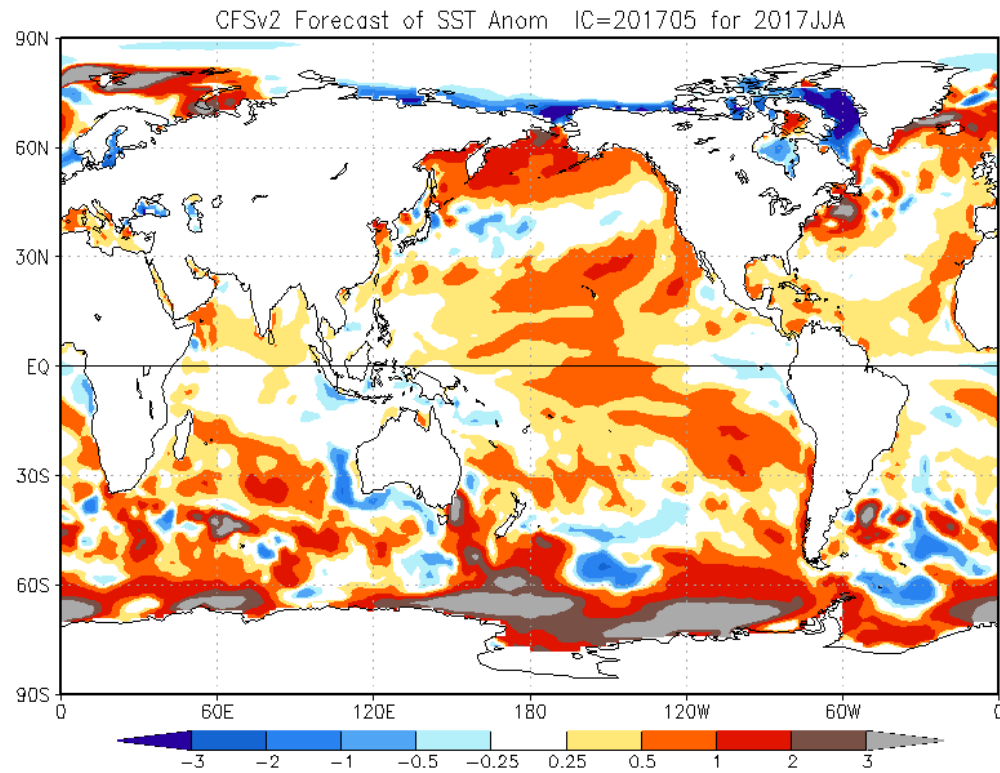
SST anomalies (K) latitude= 0.0 to -20.0 longitude= 330.0 to 15.0
Forecast initial date: 2017 501
Ensemble size: Forecast=51 Model climate=450 Analysis climate=30



Near to above average SSTs prevailed from January to April 2017.

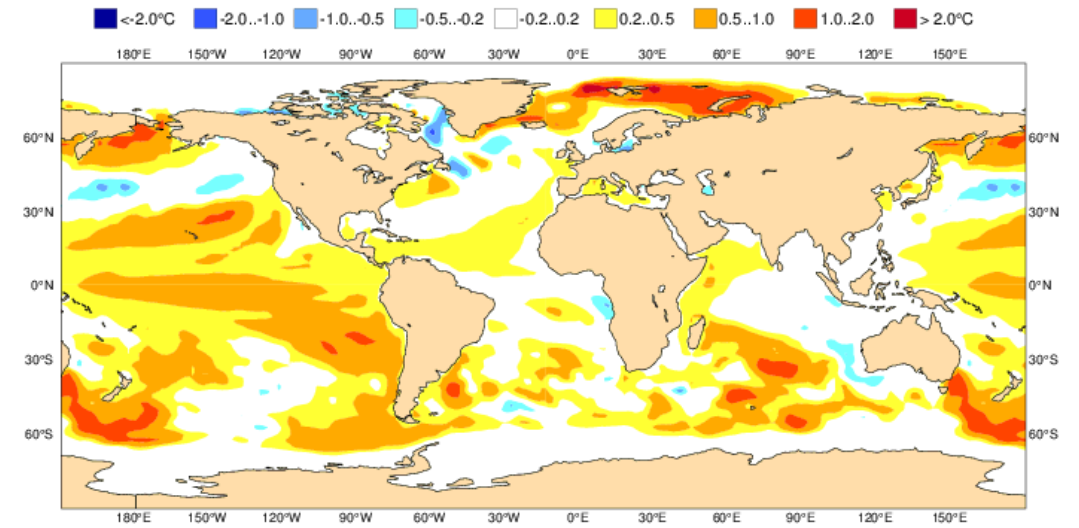


SST FORESCAT FOR NMME/EUROSIP JJA



EUROSIP multi-model seasonal forecast
Mean forecast SST anomaly
Forecast start reference is 01/05/17
Variance-standardized mean

ECMWF/Met Office/Meteo-France/NCEP/JMA
JJA 2017



http://www.cpc.ncep.noaa.gov/products/NMME/current/images/NMME_ensemble_tmepsfc_season2.png

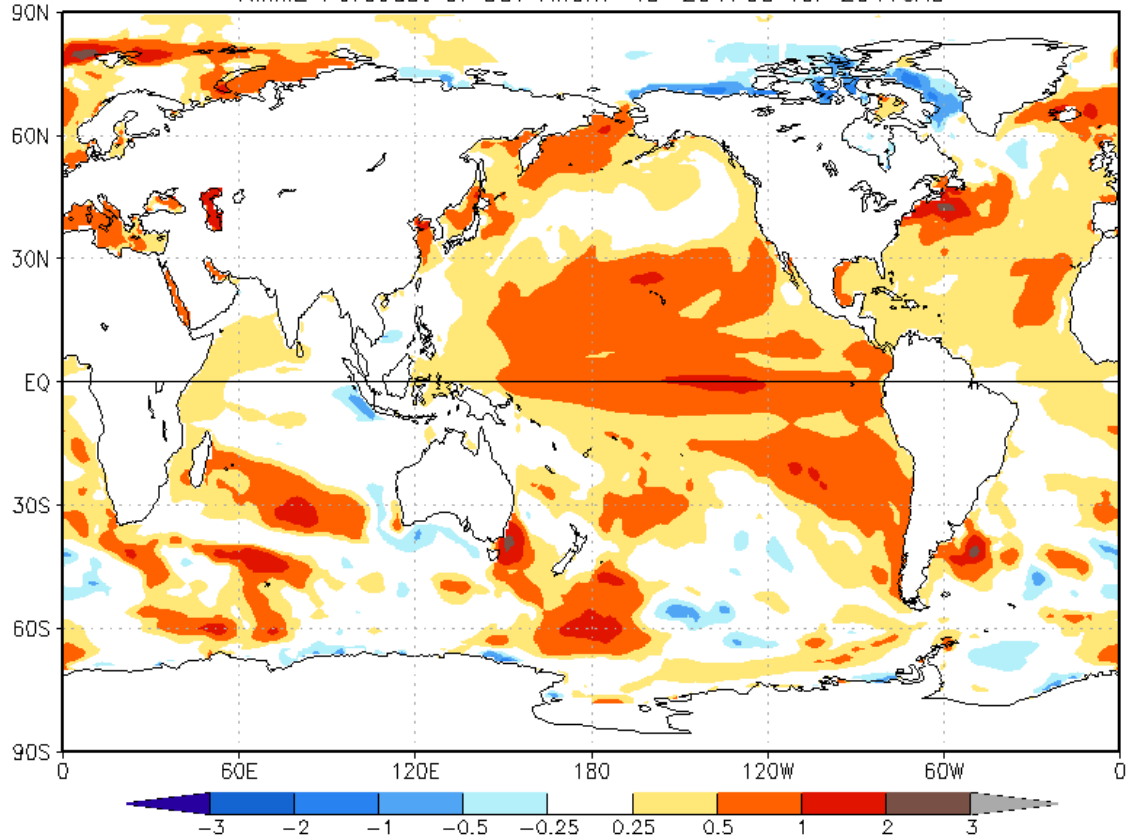
http://www.cpc.ncep.noaa.gov/products/NMME/current/images/skill_NMME_ensemble_tmepsfc_season2.png

http://www.cpc.ncep.noaa.gov/products/NMME/prob/images/prob_ensemble_tmepsfc_season2.png



SST FORESCAT FOR NMME/EUROSIP JAS

NMME Forecast of SST Anom IC=201705 for 2017JAS



EUROSIP multi-model seasonal forecast

ECMWF/Met Office/Meteo-France/NCEP/JMA

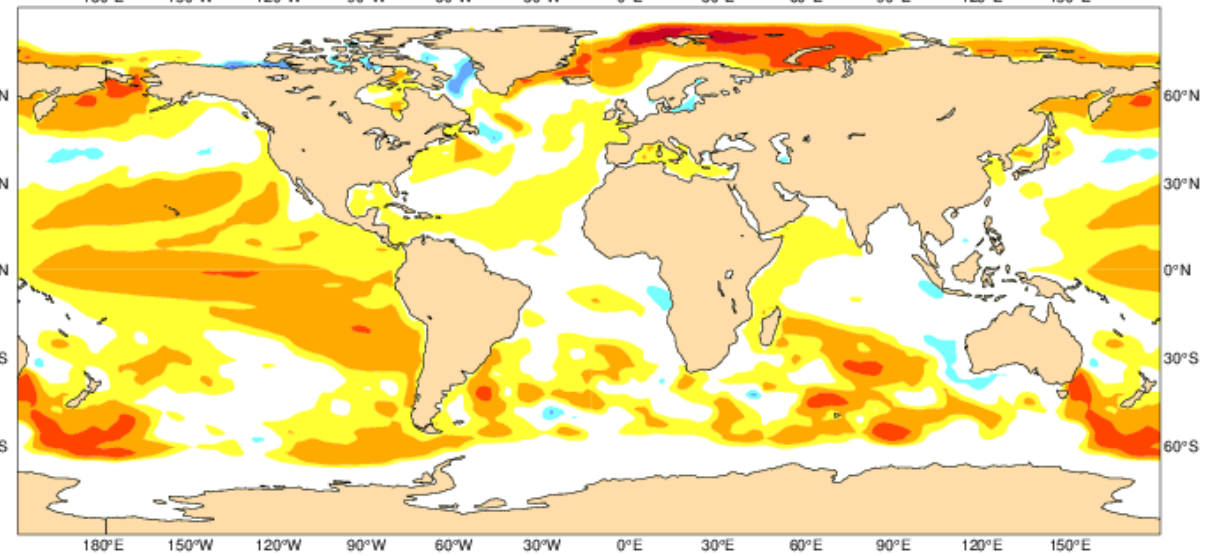
Mean forecast SST anomaly

JAS 2017

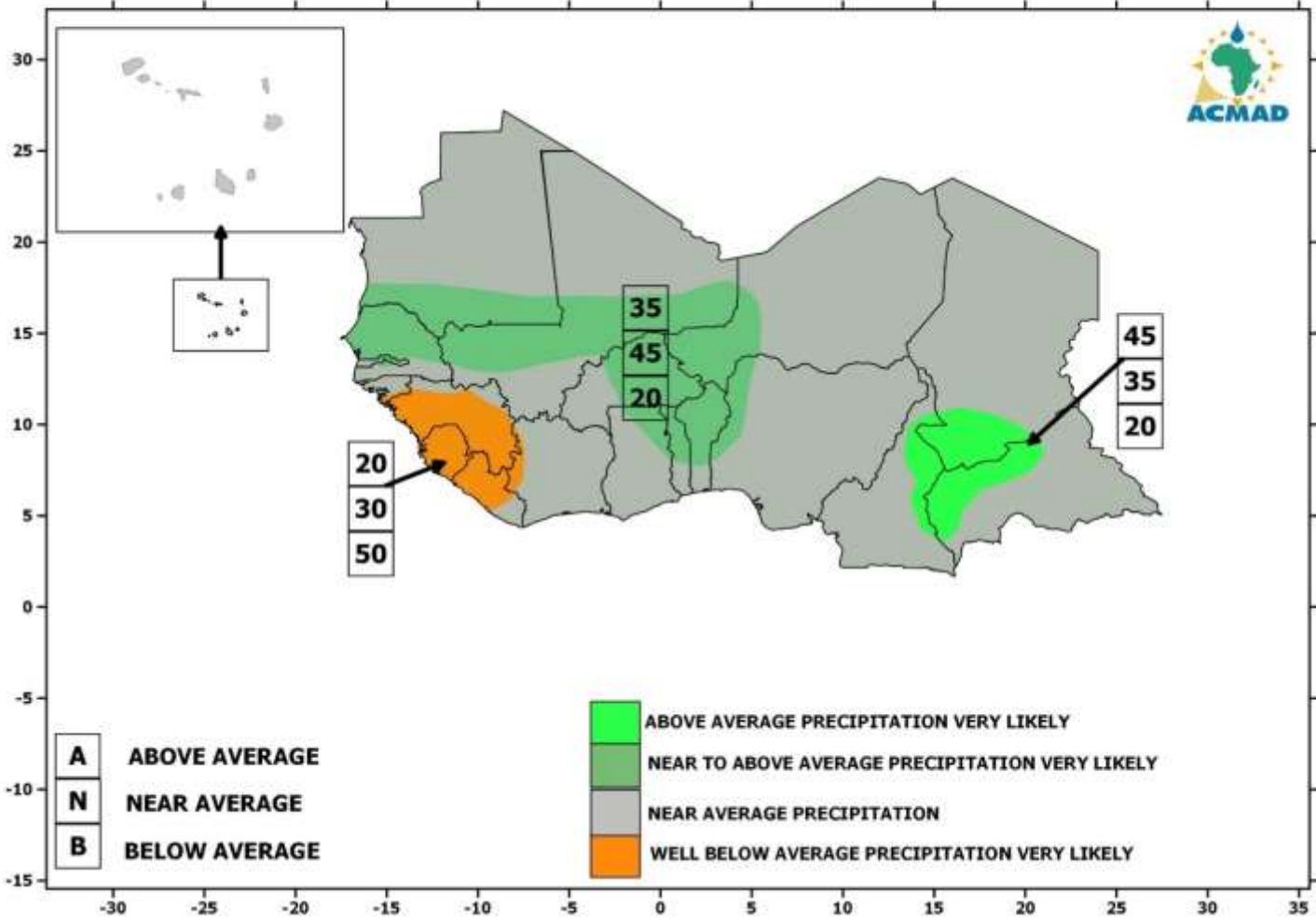
Forecast start reference is 01/05/17

Variance-standardized mean

Legend for EUROSIP multi-model seasonal forecast: <math>< -2.0^{\circ}\text{C}</math>, $-2.0..-1.0$, $-1.0..-0.5$, $-0.5..-0.2$, $-0.2..0.2$, $0.2..0.5$, $0.5..1.0$, $1.0..2.0$, $> 2.0^{\circ}\text{C}$



**SEASONAL PRECIPITATION FORECAST
FOR SUDANO-SAHELIAN REGION OF AFRICA
VALID FOR JUNE-JULY-AUGUST 2017
ISSUED ON MAY 19, 2017**



SEASONAL PRECIPITATION FORECAST FOR SUDANO-SAHELIAN REGION OF AFRICA VALID FOR JULY-AUGUST-SEPTEMBER 2017 ISSUED ON MAY 19, 2017

